

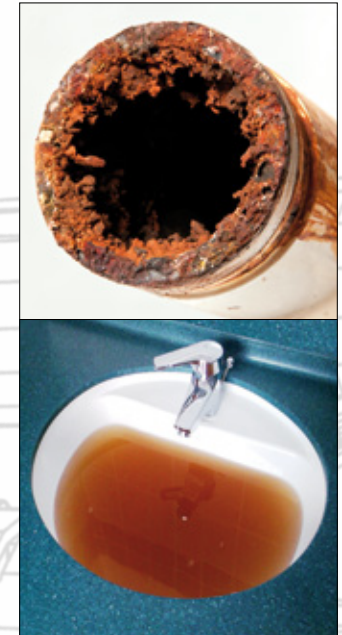
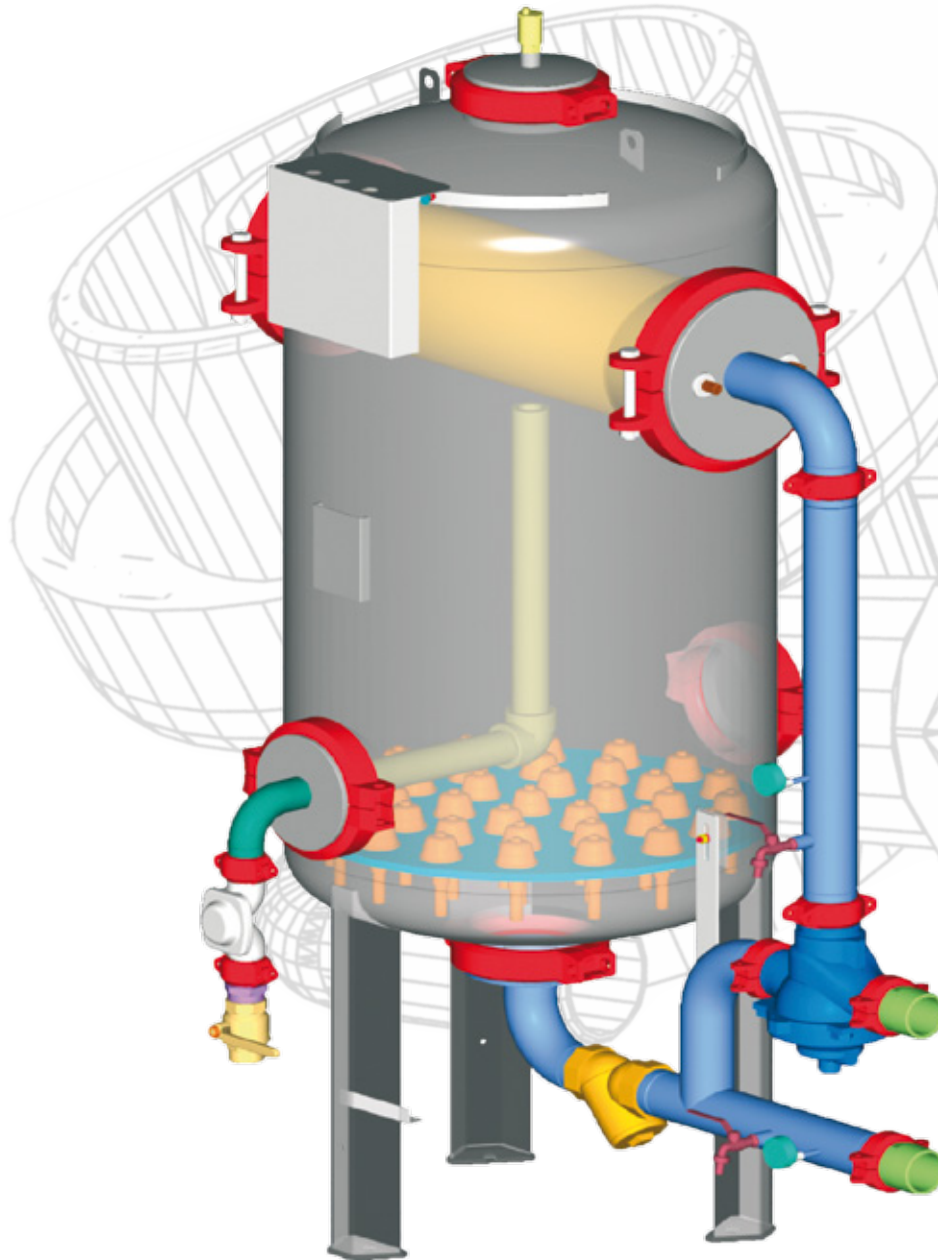


ELECTROLYTIC HOT WATER CONVERTERS EUROCLEAN KEUV TV

COMPLEX SOLUTION OF HOT WATER
CLEANING, INCLUDING DEPOSITS
AND CLOUD.
ECOLOGICAL. ECONOMICAL.
CHEMICAL-FREE. NO COMPROMISES.

A COMPLETE SOLUTION TO
THE „RUSTY” HOT WATER
PROBLEM

CONTINUAL FILTRATION OF IRON
COMPOUNDS AND INDISSOLUBLE
SUBSTANCES FROM HOT SERVICE
WATER. PROTECTION OF EXCHANGERS
AND DUCTS OF HOT SERVICE WATER
FROM THE CREATION OF CALCIUM
DEPOSITS. ADDITIONAL DISINFECTION
OF HOT SERVICE WATER.



EUROCLEAN KEUV-TV CONVERTER HAS THREE BASIC FUNCTIONS

1. CONTINUAL FILTRATION OF IRON COMPOUNDS, CLOUD AND INDISSOLUBLE SUBSTANCES FROM HOT SERVICE WATER

KEUV-TV may be used for every hot water heating system which contains circulation. For classic capillary exchangers, counterflow, plate and other types of exchangers, ducts made of iron, zinc, stainless material and even plastic. Compounds of iron and indissoluble substances are usually deposited during minimum flow through the day and at night in horizontal ducts, exchangers and similar places of hot water piping where the flow is lower. During the peak hour, between 7 and 8 in the evening, these deposits are whooshed due to raised flow and the hot water quality is lowered. The converter continually removes iron and indissoluble substances from hot water which are then physically excluded from the hot water system and thus the ducts and exchanger and other technologies are continually protected from deposits mainly out of peak hours and during cold and hot water downtimes.

The whole process is completely ecological no chemicals to refill, no need of exchange filtration media and without the need of attendance. The effect of the converter is very fast and hot water quality rises immediately after installation.



EuroClean s.r.o.

Podbabská 81/17
160 00 Praha 6
tel.: +420 224 811 900
fax.: +420 224 810 597
euroclean@euroclean.cz

2. PROTECTION OF EXCHANGERS AND DUCTS OF HOT SERVICE WATER AGAINST CALCIUM DEPOSITS CREATION

The converter may be used anywhere where the creation of calcium deposits in exchangers and ducts of hot water, encrustation of hot water gauges, and sludging of aerator sieves occurs. It is suitable for all types and materials of ducts. In case of iron and zinc ducts, the converter limits the creation of deposits which gradually lower the inside diameter of piping; in case of plastic ducts, it very effectively stops the creation of furring in the form of small balls and scales. These bog up the aerators at the discharge and lead to blocking of plastic elbows and places where these calcium products accumulate after a certain period of time. In case of plate exchangers, it prevents the need of their frequent mechanical or chemical cleaning. Due to clean heat exchange surfaces, no loss or failures during heating regulation of hot water occur.

Only excessive calcium which occurs during heating is removed from hot water systems. This means that the water is in calcium-carbonate balance after heating, just as it was beforehand. The converter removes excessive calcium from the hot water circuit, which would be otherwise deposited in the system and thus extends the service life of hot water ducts and lowers operating costs.

The converter can be used for water with a maximum hardness of 15°dH. Higher hardnesses can also be treated, but must be accompanied by additional water softening.

3. ADDITIONAL DISINFECTION OF HOT SERVICE WATER

The converter ensures additional disinfection of hot water and thus lowers the existence of microbiological life in the ducts. On the surface of the cathode and anode, an oxidative reduction reaction occurs and also a small amount of chlorine is generated.

These three biocides help to keep an acceptable level of even the frequently discussed colony of Legionella pneumophilla bacteria.

FEATURES OF EUROCLEAN KEUV-TV CONVERTERS

High efficiency of removal of all iron forms, prevents the occurrence of deposits, maintains current levels of deposits, and improves the color and cloud qualities of water.

Economics - minimal power consumption

Ecology - does not adversely affect the environment, does not use any chemicals, changeable filtration inserts etc. All parts are recyclable.

The converter is fully automatic and does not need any attendance

ADVANTAGES:

Improvement of hot water quality at minimum operation costs

Lowering of maintenance and operation costs of all technologies of hot water generation

Prolongation of ducts service life and periods of exchangers cleaning

Lowering of costs for hot water generation

No adverse effects on environment

Removal even of impurities occurring in circulation of hot water

	KEUV-TV MINI	KEUV-TV01	KEUV-TV02	KEUV-TV03
Maximum flow (m ³ /h)	3,5	6	14	25
Suitable for number of flats approx.:	20-40	40-100	100-600	600-1000
DN input/output (mm)	40	50	50	80
Max. power consumption (W))	30	55	95	125
Max. operational temp. (°C)	60	60	60	60
Max. operational overpressure (MPa)	1	1	1	1